



HARTA PACKAGING INDUSTRIES (PERAK) SDN. BHD.

(A Member of Oji Group)



Company Profile
Edition 2020

CORPORATE INFORMATION

Company Name	: Harta Packaging Industries (Perak) Sdn. Bhd. (221484-M) (A Member of Oji Group)
Incorporation Date	: 23 rd July 1991
Factory Address	: Plant 1 PT 685, Jalan Perusahaan 3, Kawasan Perusahaan Parit Buntar, 34200 Parit Buntar, Perak, Malaysia. : Plant 2 Plot 658, Kawasan Perusahaan Parit Buntar, 34200 Parit Buntar, Perak, Malaysia.
Telephone No.	: +605-716 6778 / 716 3136
Fax No.	: +605-716 1601
Website	: www.hartapack.com
Contact Person	: Mr. Lim Kok Siong General Manager Mobile: +6017-776 2266 (Ext: 222) Email: koksiong_lim@hartaperak.com
A Wholly Owned Subsidiary of	: HPI Resources Berhad (A Member of OJI Group) Plo 7, Kawasan Perindustrian Parit Raja 86400 Batu Pahat, Johor. Tel No: +607-4548 333 Fax No: +607-4541 555
Paid-up Capital	: RM 3,000,000.00
Nature of Business	: Manufacturing various kinds of corrugated paper boards and carton boxes, partitions, die-cut pads, inner boxes, gift boxes of A, B, C, E, BA, BC, BE, AA and AAA flute.
Land Area	: 5.02 acres (218,671 sq. ft.) – Plant 1 (HP1) 2.99 acres (130,244 sq. ft.) – Plant 2 (HP2)
Built-up Area	: 143,000 sq. ft. – Plant 1 98,000 sq. ft. – Plant 2
Bankers	: Malayan Banking Berhad HSBC Bank Malaysia Berhad OCBC Bank Malaysia Berhad CIMB Bank Berhad
Capacity	: HP1 -3,000MT/ month, HP2 -2,000MT/ month

RAW MATERIALS

The company views raw materials as important components to produce high quality products. Raw materials such as paper rolls are acquired locally and from overseas countries such as New Zealand, USA, Australia, Japan, Korea, Vietnam and Thailand.

In order to ensure that our customers get their cartons on time, we maintain an average stock level of 1.5 months. Raw materials will be individually checked and tested before they are allowed to enter the warehouse. The tests include bursting strength test, ring crush test, moisture test and grammage test.

PRODUCTS

- Corrugated Paper Boards
Fluting available – A, B, C, E, BA, BC, BE, AA and AAA
- Corrugated Cartons
- Layer Pads
- Nesting
- Partitions
- Heavy Duty
- Paper Pallets
- Slip Sheets

QUALITY CONTROL

Quality is one of our most important objectives. The QC System that we apply on our products is One-Line Checking System and random Check System. QC personnel have been well-trained to check on paper substance, board hardness, measurement, printing sharpness, slotting accuracy, gluing adhesion, stitching accuracy and last but not least, the delivery condition. Raw Materials and finished goods are randomly checked and tested by using the company's quality checking instruments before sending out the cartons to customers.

TEST EQUIPMENT

- **Bursting Strength Tester (Gotech-Taiwan)**

To determine the bursting strength of paper, corrugated board and carton.

There have 2 bursting testers: -

- 1) Bursting Strength Tester (Model: GT-7013-AD)
- 2) Automatically Bursting Strength Tester (Model: GT-7013-MD)



- **Micro-Computer Container Compression Tester (Gotech-Taiwan)**

This machine has a built-in highly accurate load cell and CPU to enable direct viewing of the force value on display. It is used to test the compression level of containers, cartons and etc. (Model: GT-7001-D)



- **Mirco-Computer Ring Crush Tester (Gotech-Taiwan)**

Incorporates a highly accurate load cell and CPU to enable direct view of the strength of the specimen on display. It is used to test ring crush strength (vertical, horizontal) of paper materials.

There are 2 ring crush testers: -

- 1) Mirco-Computer Ring Crush Tester (Model: GT-6011)
- 2) Mirco-Computer Ring Crush Tester (Model: GT-6011-B)

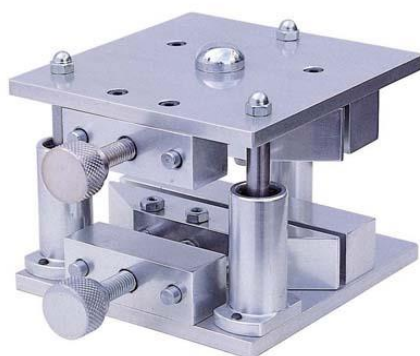


- **Edge Crush Test Accessories (Gotech-Taiwan)**

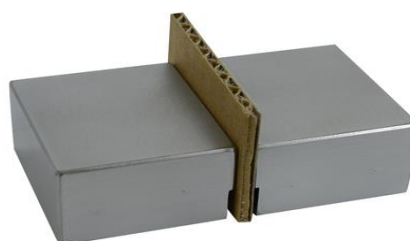
Used for determining: -

- 1) Upright crush resistance of butterfly type specimen. (Model: 6011-2)
- 2) Edgewise compressive strength (ECT), perpendicular to axis of flutes, of a short column of single, double, or triple-wall corrugated fiberboard. (Model: 6011-2-2)

GT-6011-2



GT-6011-2-2



- **Die-Cutter (Gotech-Taiwan)**

Used for preparing the standard specimen for ring crush test or others.
(Model: GT-6018)

GT-6018



- **Sample Cutter for Column Compression (Gotech-Taiwan)**

Use 3 types of cutters: -

- 1) Parallel Cutter (Model: GT-6019-A)
- 2) Angle Cutter (Model: GT-6019-B)
- 3) Neckdown Cutter to get a standard specimen for column compression test. (Model: GT-6020)

GT-6019-A



GT-6019-B



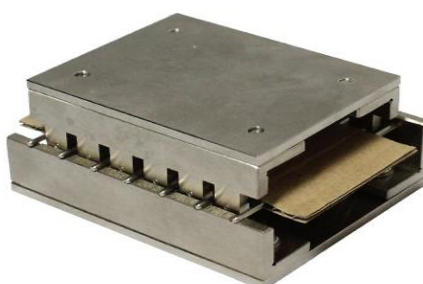
GT-6020



- **Pin Adhesion Attachment (Gotech-Taiwan)**

Used for determining the adhesive strength of single wall (double faces) corrugated board after being glued. (Model: GT-6011-1)

GT-6011-1



- **Basic Weight Scale (Shinko- Japan) & (AnD-Japan)**

Get the weight of paper or paper board.

(Model: Shinko- DJ-300E) & (Model: AnD- GF-3000)

DJ-300E



GF-3000



QUALITY ASSURANCE POLICY

“Quality means in enhancing competitiveness”

- **OBJECTIVES**

We believe in teamwork that will increase quality awareness and shall enhance the quality of working life.

We promote our product and service quality through productivity and technological improvements.

INTEGRATED MANAGEMENT SYSTEM



We adopt an integrated Management System that not only focuses on quality excellence, but embraces also the environmental and safety concepts close to our hearts as evidenced by achievement of the prestigious **ISO 9001:2015, ISO 14001:2015 and ISO 45001:2018 Certifications.**

PLANT 2 BUILDING

Plant 2 Front View



Plant 2 Side View



NEW PRODUCT DEVELOPMENT FROM 2013

- **Heavy Duty Corrugated Boxes (AAAF & AAF)**

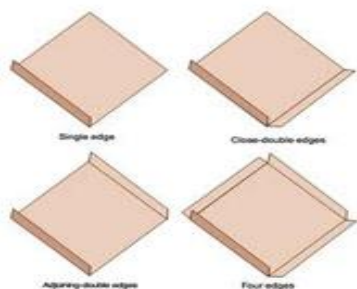


- Mainly used as substitute for wooden crate boxes.
- Used for heavy industries, i.e. Solar Industry, Automotive, Chemical etc.
- Paper Substances: Max.: K440 & Min: K250

- **Paper Pallets**



- **Slip Sheets**



- Used as a more environmental-friendly and cost-effective replacement for the heavy wooden pallets.

KAIZEN PROGRAM

- We adopt Kaizen activities since year 2016.
- Kaizen is a continual improvement activity on daily practice that able to bring us towards improving our quality, productivity, safety and a better workplace culture.



SAFETY PROGRAM

"To be environmentally and socially responsible through a continuous improvement commitment environment of effective safety and health management system."

- Machinery Safety Training



- Other Trainings

Monthly Safety Assembly



ERT Training



Chemical Handling Training

